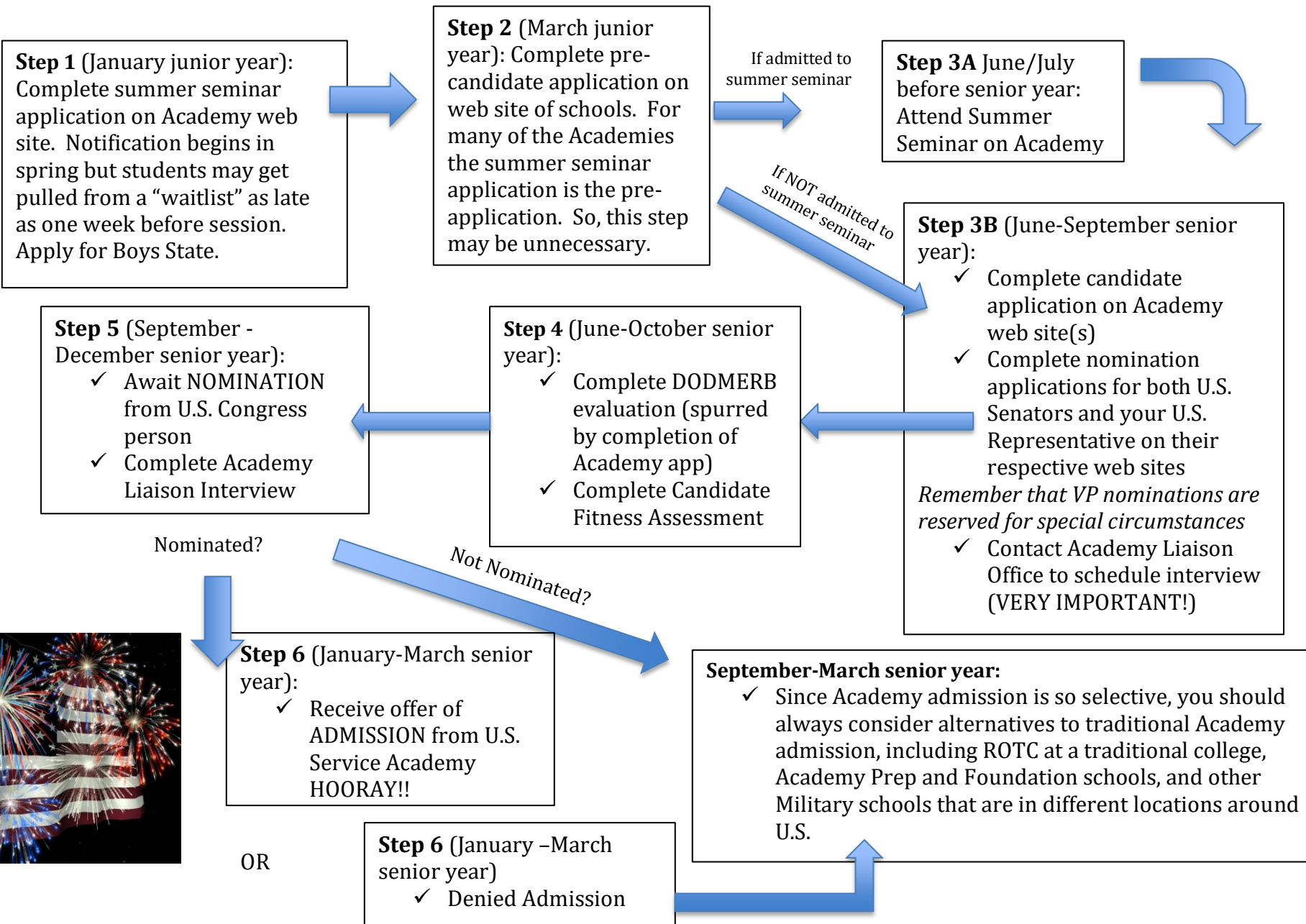


SAINT LOUIS PRIORY SCHOOL & WHITFIELD SCHOOL OFFICES OF COLLEGE COUNSELING ACADEMY ADMISSIONS AND NOMINATION FLOW CHART

(US AIR FORCE ACADEMY, US COAST GUARD ACADEMY, US MERCHANT MARINE ACADEMY,
US NAVAL ACADEMY, AND US MILITARY ACADEMY AT WEST POINT)



ACADEMY ADMISSIONS INFORMATION

This handout is designed to serve as a GUIDE in helping you negotiate the Academy Admissions Process. Academy Admissions is a multi-step process that requires months of persistence and a subset of initial qualifications that surpass the requirements of competitive admissions at most highly selective 4-year institutions in the U.S. At a minimum, in order to be considered a viable candidate to BEGIN the Academy Admissions process, students must have the following qualifications:

1. Outstanding grades (Academy candidates from Priory School must typically have above a 3.5 grade point average) in rigorous college preparatory coursework (Here are the classes termed the “Big 5” in Academy admissions: AP Calculus AB or BC; AP Chemistry; AP Physics; AP Literature and/or Language*; AP History, U.S. or Euro, though Government would likely be considered equivalent).
2. Outstanding test scores (scoring in the top 10% or better on either SAT or ACT)
3. Superior physical ability. Candidates are required to complete a Candidate Fitness Assessment prior to receiving an appointment. This “one-and-done” assessment has several benchmarks and includes pull-ups, sit-ups, push-ups, a mile run, plus a shuttle run and basketball throw. Each benchmark has required minimums; for more information, see Academy web site. *Being an athlete in excellent physical condition greatly helps this.* The St. Louis Military Officer Support Foundation, run by Keith Hauser of Shark Fitness, provides free physical, weapons and hand-to-hand combat training to St. Louis area students interested in the Academies or ROTC. You can find the information for the Foundation on Facebook. **IT IS HIGHLY RECOMMENDED YOU PARTICIPATE IN THE BOOT CAMP OFFERED BY SHARK FITNESS!**
4. Superior Leadership Resume. Special consideration is given to candidates who have been officers in Student Council, editors of the newspaper or yearbook, captains of athletic teams, Eagle Scouts, president or vice-president of clubs, and/or significant role in community service activity(ies). Participation in Boys State is also given significant weight in the application process.
5. Significant Community Service is important to the Academies, particularly service done beyond that organized or required by your high school.
6. No medical issues.** Candidates are required to complete a Department of Defense physical evaluation (commonly called the DODMERB) before being fully cleared for an appointment. Some common medical disqualifiers would be asthma, eczema, and any other physical impairment. In addition, all medicines the student currently takes are evaluated, including drugs for ADD and ADHD; students with an IEP (i.e, students whose curriculum has been modified for learning disability and who currently receive extended time on tests) are typically not qualified. However, students in this category who wish to be considered may abstain from all medication and accommodation for a period of twelve months prior to enrollment and be considered *in some instances*. Students denied because of a medical issue may appeal their denial. The appeal review process can take anywhere from 6 to 8 months, so early application IS A MUST.
7. The Academies recommend that you apply to more than one of them. In addition, since the Academies require such a specific commitment to the military way of life, they also expect that you will apply to ROTC programs at traditional colleges. They believe that if you are interested in attending an Academy, then you are definitely interested in a military career and thus should be pursuing all avenues.
8. One of the guides they use to judge your readiness for their programs is the way in which you manage the application process. In particular, they look for attention to detail (there are lots of little details in this process) and timeliness. **This is not an application that you want to submit at the deadline. The earlier the better in this case.** WE STRONGLY ENCOURAGE YOU TO COMPLETE YOUR ACADEMY, ROTC and NOMINATION APPLICATIONS BY AUGUST OF YOUR SENIOR YEAR.

*Candidates will not be penalized for coursework their school does not offer. Therefore, do not be concerned that Priory does not offer AP Literature or AP English Language. The Academies receive information about what courses are available to a student at Priory in the form of our School Profile, which is sent with every college application.

**Athletes may get a medical waiver for an injury if they are actively being recruited.

Special Note: The U.S. Service Academies are all affected by cuts to Defense budgets and the need for active military servicemen and women. Therefore, the draw-down in the current U.S. conflicts abroad is causing the number of students who are ADMITTED after they have received a NOMINATION to decrease.

SPECIAL CONSIDERATIONS FOR SPECIFIC ACADEMIES:

Air Force Academy:

1. Grade point average is recalculated for all candidates with additional weight given to AP, IB, and dual enrollment courses. Additional weight is given to honors courses, but not as much as to AP, IB, and dual enrollment courses. Non-academic courses are NOT calculated in the grade point average.
2. At a minimum, students must submit three evaluations from teachers of Math/Science and English and counselor letter. Most qualified candidates will have an additional three “optional” (read=required) letters from others who know the student well. Only three additional letters are considered.
3. The weighting in the ADMISSIONS PROCESS (note that this is different from the process by which a student receives a NOMINATION from his U.S. Congress person) is 60% academic, 20% extracurricular, and 20% the recommendation of the Selections Review Panel. For extracurricular engagement, ATHLETICS seems to have particular appeal.

4. Testing ranges include

<u>ACT</u>		<u>SAT</u>	
English	28-33	Critical Reading	600-690
Math	28-33	Math	630-720
Science	28-33		
Reading	27-32		

ACT and SAT scores are “super scored.”

5. The Air Force Academy curriculum is 50% math and science, therefore, grades in those classes are VERY IMPORTANT!
6. AFA admissions is divided by region. Missouri is in Region 4, with Arizona, Arkansas, Kansas, Louisiana, Oklahoma, New Mexico, and Texas.
7. Each U.S. Service Academy has a “prep” academy or “foundation” school for candidates who are not admitted but whom they would still like to admit to the full academy after a successful year of study. The AFA Prep School and Falcon Foundation is reserved for candidates who might need a “bump” for admissions who otherwise demonstrate full eligibility for the Academy (ie, they are both medically and physically qualified). These students are typically from diverse backgrounds; are recruited student athletes; or are from Congressional districts that do not have viable candidates. Therefore, if you are NOT admitted to USAFA, you may expect to complete a different route to the Academy UNLESS you meet one of the previously stated criteria. Students who are admitted to the AFA prep school or Falcon Foundation will not need to complete a separate application but will be automatically considered based on their AFA academy application. These students may also be considered WITHOUT having received a Congressional nomination.

Naval Academy:

1. Grade point average is recalculated for all candidates with additional weight given to AP, IB, and dual enrollment courses. Additional weight is given to honors courses, but not as much as to AP, IB, and dual enrollment courses. Non-academic courses are NOT calculated in the grade point average.

2. The Naval Academy prefers fewer recommendations than the Air Force Academy; four is plenty. You must submit two teacher recommendations (math/science and English/history/foreign language) and a counselor recommendation. A recommendation from someone who knows you in a leadership capacity is also a good idea, coach, club sponsor, etc.
3. The Naval Academy also has a curriculum that is 50% or more math and science based regardless of your major. In addition, based on the world geopolitical focus currently, the need for officers with the ability to speak multiple languages is forefront. So, preference is given in the admission process to those students who are interested in math and science fields and/or who have a clear background in and future interest in languages (particularly Chinese and Arabic).
4. The Naval Academy gives high priority to candidates who at least apply for the Summer Session even if they are not admitted to it.
5. Despite the fact that their timing does not complete until the March of the senior year, they expect candidates to do everything early. Waiting to submit on the deadline is frowned upon significantly.
6. Candidates to the Naval Academy are encouraged to apply to the VP for a nomination. That list goes to the admissions people after all the other nominations have been submitted at the end of January and the VP office essentially says, "use these nominations to fill in anywhere you see fit." It's a way to be sure people the Navy really wants may be admitted.
7. Neither counselor nor candidate can call the admissions office directly; all calls and requests are funneled through the Blue and Gold Officer. Your Blue and Gold officer will be listed on your application. You should contact that individual AS SOON AS YOU BEGIN TO WORK ON YOUR APPLICATION! They are your cheerleaders and advocates in this process. Get to know yours well!
8. ACT and SAT Scores are "super-scored".
9. Candidates are reviewed by region as with the Air Force Academy.

West Point: The United States Military Academy (Army)

1. Definitely make contact with and get to know your Regional Admission Representative. Missouri is in the Southwest Region. The Admission Representative's information is available on the West Point website or from your college counselor. This representative is critical in the process and can assist in assuring that your application makes it through the application process in a timely fashion.
2. West Point is the most focused on enrolling well-rounded students of the three traditional military academies. They weight academics at 60% of the admission decision and 30% on leadership potential as demonstrated through involvement. 10% of the evaluation is on physical fitness.
3. At West Point, Boys State participation is particularly important as is becoming an Eagle Scout. These two activities are given extra points in the review process.
4. The Summer Academy at West Point will give you a good feel for life at the Academy but it does not necessarily help in the admission process. Admission to this Academy's Summer program is highly limited so don't worry if you are not accepted into it.
5. West Point begins doing admission review in August and meets once a month to review from then on. Ideally, you will have your application complete for review in August. Because of the draw down, fewer spots are awarded in the early months but the Admission Committee does make note of when your application was submitted. They will review you each month until they feel ready to make a decision. Our Congressional Delegation gives priority to those candidates who have already been accepted when awarding nominations, so it is in your best interest to submit all parts of your application as early as possible.
6. Above all else, West Point is about leadership. You need to highlight and emphasize leadership in all aspects of your application. Service outside of Priory's requirement is important as well. Mission trips to international locations are viewed with particular favor. For West Point, they believe that candidates demonstrate initiative, organization, trustworthiness and ability to lead others through their activities in high school through outside activities.
7. It is in your best interest to make connections to St. Louis area students who are currently enrolled at West Point. This is particularly true after you are admitted. They will help make your transition much more successful.

SPECIAL NOTES ABOUT THE NOMINATION PROCESS:

1. The Missouri Congressional delegation does a nice job of working with each other. Senator Blunt's office in particular is good about coordinating with the US Representatives' offices to assure that as many students as possible receive nominations. This, however, does not guarantee you a nomination.
2. The Academy nomination process is EARLY! And, you need to be assured that you are following the application procedures for each office. There IS NO common application for this process. Each office wants slightly different information. The Senate nomination applications are online but the Representative ones vary by US Representative. Each member of Congress has an Academy Nomination Coordinator. It is in your best interest to reach out to that individual early in the spring of your junior year. Here are the contact information details for the most common Representative and Senator offices:

Office of Congressman Lacy Clay (St. Louis City and immediate area)

Attn: Academy Nominations
111 S. 10th Street Suite 24.344
St. Louis, MO 63102
Phone: (314) 367-1970
Fax: (314) 367-1341

Office of Congressman Blaine Luetkemeyer (St. Charles County)

Attn: Academy Nominations
2117 Missouri Boulevard
Jefferson City, Mo., 65109
Phone: (573) 635-7232
Fax: (573) 635-8347

Office of Congresswoman Ann Wagner (St. Louis and some of St. Charles Counties)

Attn: Jaci Winship
30 Sovereign Court, Suite 201

St. Louis, MO 63011

Phone: 636-779-5449

jaci.winship@mail.house.gov

Office of U.S. Senator Claire McCaskill

ATTN: Service Academy Coordinator

5850 Delmar Boulevard, Suite A

Saint Louis, MO 63112

Phone: (314) 367-1364

academy@mccaskill.senate.gov

U.S. Senator Roy Blunt

c/o Academy Coordinator

7700 Bonhomme, Suite 315

Clayton, MO 63105

Phone: (314) 725-4484

Fax: (314) 727-3548

3. **Do not wait until the deadline to file.** You want to assure that you have time to verify that all materials are received.
4. If your family has connections to your Representative or to either of the Senators, this would be a good time to utilize them.

IMPORTANT WEBSITES:

Academy Nominations

US Representative Lacy Clay Nominations: <https://lacyclay.house.gov/services/military-academy-nominations>

US Representative Blaine Luetkemeyer Nominations: <http://luetkemeyer.house.gov/constituentservices/serviceacademynominations.htm>

US Representative Ann Wagner Nominations: <http://wagner.house.gov/military-academy-nominations>

Senator Roy Blunt Academy Nominations: www.blunt.senate.gov/public/index.cfm/academy-application-process

Senator Claire McCaskill Academy Nominations: <http://mccaskill.senate.gov/?p=page&id=287>

Vice President's Academy Nominations: <http://www.whitehouse.gov/administration/vice-president-biden/academy-nominations>

Website to Locate Your US Representative: <http://www.house.gov/representatives/find/>

Academy Websites:

Air Force www.academyadmissions.com

Coast Guard www.cga.edu

Merchant Marine www.usmma.edu

Naval www.usna.edu

West Point (Army) www.usma.edu

ROTC Websites:

Air Force www.afrotc.com/scholarships

Army www.goarmy.com/rotc/scholarships

Navy/Marines www.nrotc.navy.mil/scholarships

ONE LAST NOTE:

There are actually five Academies in the United States. The three Academies that everyone thinks of -- US Air Force Academy, US Naval Academy, US Military Academy at West Point -- as well as the *US Coast Guard Academy* and the *US Merchant Marine Academy*. Both the Coast Guard and Merchant Marine Academies provide interesting and dynamic programs for students. If you are interested in either of these Academies, please contact your College Counselor. And in the words of a seasoned College Counselor: **"If you are strong in academics, testing, fitness and leadership, then start early and follow the rules."**